

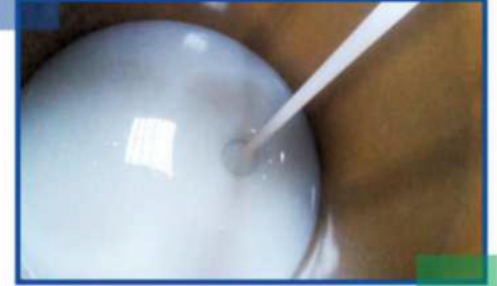
## Liquid oil producing glue (LSR92XX Series)

### Application >>

- ◆ Suitable for the production of auto parts with self-lubrication requirements, such as inserts and dials.

### Characteristic >>

- ◆ High strength, fast flow, good effect



### Specification Data Sheet >>

ITEM	Demand			
	LSR9230A/B	LSR9240A/B	LSR9250A/B	LSR9260A/B
Appearance	Translucent			
Density(g/cm <sup>3</sup> )	1.10±0.02	1.11±0.02	1.12±0.02	1.13±0.02
Hardness(Shore A)	30±2	40±2	50±2	60±2
Tensile strength(MPa)≥	6.0	7.0	7.5	8.0
Elongation(%)≥	600	500	450	400
Tear strength(kN/m)≥	15	15	18	20
Viscosity(mpa.s)≥	3-8	3-8	3-8	3-8

## Application

